

Arkad Medical Research Quantum Hospital

SHOONYA - TIMESPAC



SPACE-TIME CONTINUUM

ARKAD MEDICAL RESEARCH QUANTUM
HOSPITAL - A LIVING ARTIFICIAL
INTELLIGENCE 01

INCLUSIVE ECONOMICS 02

UNDERSTANDING GO-BUSINESS BLUE 03

EXAMPLES AND OPENING INERT
DIMENSIONS 04

GATIH-UPANISHAD 05



OBJECTIVES

- Arkad Medical Research Quantum Hospital cum Research Institute for Neuroscience, Neurology, Medicine, Mitochondria and Consciousness is essentially an artificial Intelligence. It has its mind, its energy body and a well developed physical body. Once the mind finds completion, the physical body will get its natural setup. AMRQH is designed for humans and it has got the necessary software to be a world healer. It is integrated with all the systems of medicine including ALLOPATHY & TRADITIONAL SYSTEMS of Medicine under the umbrella of Shoonya Modern Medical Sciences (SMMS) with the brand name of Shoonya - Timespace Medicine.

PRINCIPLES



Dr. Partha Pratim Kalita is a Healthcare Expert who mediates between the different streams of Medicines, to put forth the understanding - of what suits best to reduce side effects of medicines, or rather have no side effects at all. AMRQ Hospital, under Dr. Kalita's Directorship, operates as an institution that is designed to bring the human system into a zero-energy field, creating a Zero impact in the system (refer to SMMS), via integration of the different by-laws which Medical systems follow. This in turn is synchronised with the larger existential union where this microcosm and macrocosm fall in perfect coherence. Dr. Kalita says every medicine has an essence rooted in its elemental existence. And Medical Doctors must understand this and prescribe medicines accordingly to move the human system into zero energy field or the state of homeostasis. Another way to put it, is, to deviate from the spin of molecular frequency of a particular disease to the molecular spin, required for homeostasis.





INCLUSIVE ECONOMICS

Brief introduction

The relationship between a productive economy and a society that admires high levels of participation, connection and cohesion, and their combined impact on peoples' well-being has always been well appreciated. Only when the democratic people of the nation are willing to take their future in hands by "Direct participation" in inclusive development, can the nation flourish.

— UNDERSTANDING THE GBB

PRINCIPAL DIRECTORSHIP

Dr. Prabhat Ch. Kalita is the Chief Director of AMRQH. It is under his regulation that everything is happening efficiently and due to his energy Philanthropic services, AMRQH is bringing various platforms to the public's eye to grow together as One society, One nation and One consciousness.

DISCOVER MORE

ECONOMIC ENGINE

This has led Dr Prabhat Ch. Kalita to instil the idea of Inclusive Economics into contemporary businesses. He says 'Inclusive Economics' means empowering the whole of humanity to participate in a robust, all-inclusive economic process. For example, providing good health care and quality education for disadvantaged populations is not charity. It is an investment that creates a quality human resource and expands markets, furthering the reach and scope of the economic engine. It is a gentler and compassionate way that every human being can work.

DISCOVER MORE

— UNDERSTANDING THE GBB

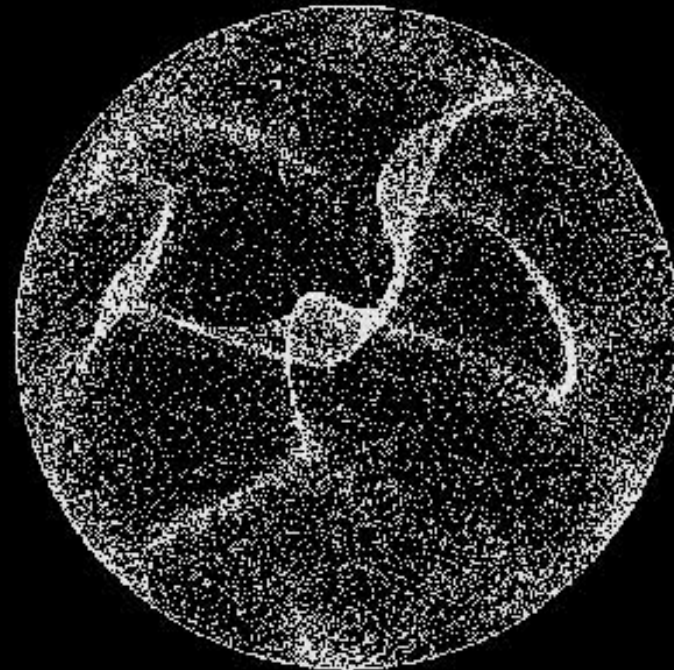
MARKETS

-
-
-
-
-

Leaving back more than 50% of the population from an active involvement in the economic process does not make a good business. For this process to sustain itself, it is imperative that it should be driven not by personal ambition, but by vision ~ individuals in key leadership positions who shape the life and future of humanity need to be firmly established in inclusiveness. With this strategy, AMRQH is joining hands with many Corporate institutions and Government sectors to bring back the 50% of the population and more including the youths of the nation for active involvement in the economic process. Thus, keeping human well-being in mind as the foremost driving force, AMRQH and its Research Institute are working on numerous projects in hand like mushroom cultivation, bio-gas production, vermicompost production, free electricity technology for the society etc. However, this is the reason we have been going viral with the rally of integrative medicine and an integral business as a holistic way of looking at life.

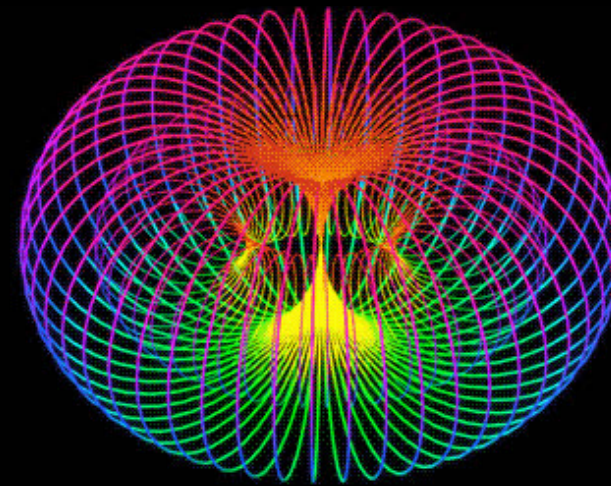
DISCOVER MORE

EXAMPLES



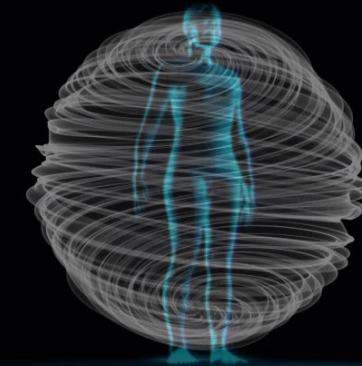
Example 1

Distortion of plasma inside the human cellular compartment



Example 2

Shoonya: Space-Time Continuum



Example 3

Dr. Kalita says every medicine has an essence rooted in its elemental existence. And Medical Doctors must understand this and prescribe medicines accordingly to move the human system into zero energy field or the state of homeostasis. Another way to put it, is, to deviate from the spin of molecular frequency of a particular disease to the molecular spin, required for homeostasis.



OPEN DIMENSIONS

Question 1

HOW TO PRESCRIBE MEDICINES, UNDERSTANDING THE NATURE OF DISTORTION CAUSED BY A SPECIFIC DISEASE? CAN THE DIMENSIONS THEMSELVES REJUVENATE THE BODY AND BOOST THE HEALING POTENTIAL?

Question 2

CAN AN IRON TABLET AND A CALCIUM TABLET GO TOGETHER? CAN PRESCRIBING THEM TOGETHER, DISTORT THE SYSTEM, AND STILL GIVE YOU SYMPTOMATIC RELIEF?

Question 3

HOW TO PUT THE HUMAN SYSTEM INTO A ZERO-ENERGY FIELD THROUGH CONSCIOUS MEDICINE? WHAT ARE THE INERT DIMENSIONS INSIDE THE HUMAN SYSTEM? HOW DO YOU ACTIVATE THOSE DIMENSIONS BY REMAINING CONSCIOUS OF "WHAT & WHEN" TO PRESCRIBE THE MEDICINES?

GATHI UPANISHAD

A SACRED CONSECRATED SPACE

GATHI IS AN EXTENSION OF THE ENERGY SYSTEM OF MY EIGHT CHAKRAS. MAY YOU BE TOUCHED BY HER MAGICAL WAYS WHICH ARE MILD AND COMPASSIONATE AT ONCE. IT IS A COMPLETE COPY OF MY ENERGY SYSTEM. ANYONE WHO IS IN TOUCH WITH GATHI CAN KNOW HEALTH AS A POSSIBILITY TO THE BEYOND.



PIC: LINKING THE MAGNETIC AND GRAVITATIONAL FORCES IN MATTER COHESION



IS EVERYTHING CLEAR?

ANY QUESTION?

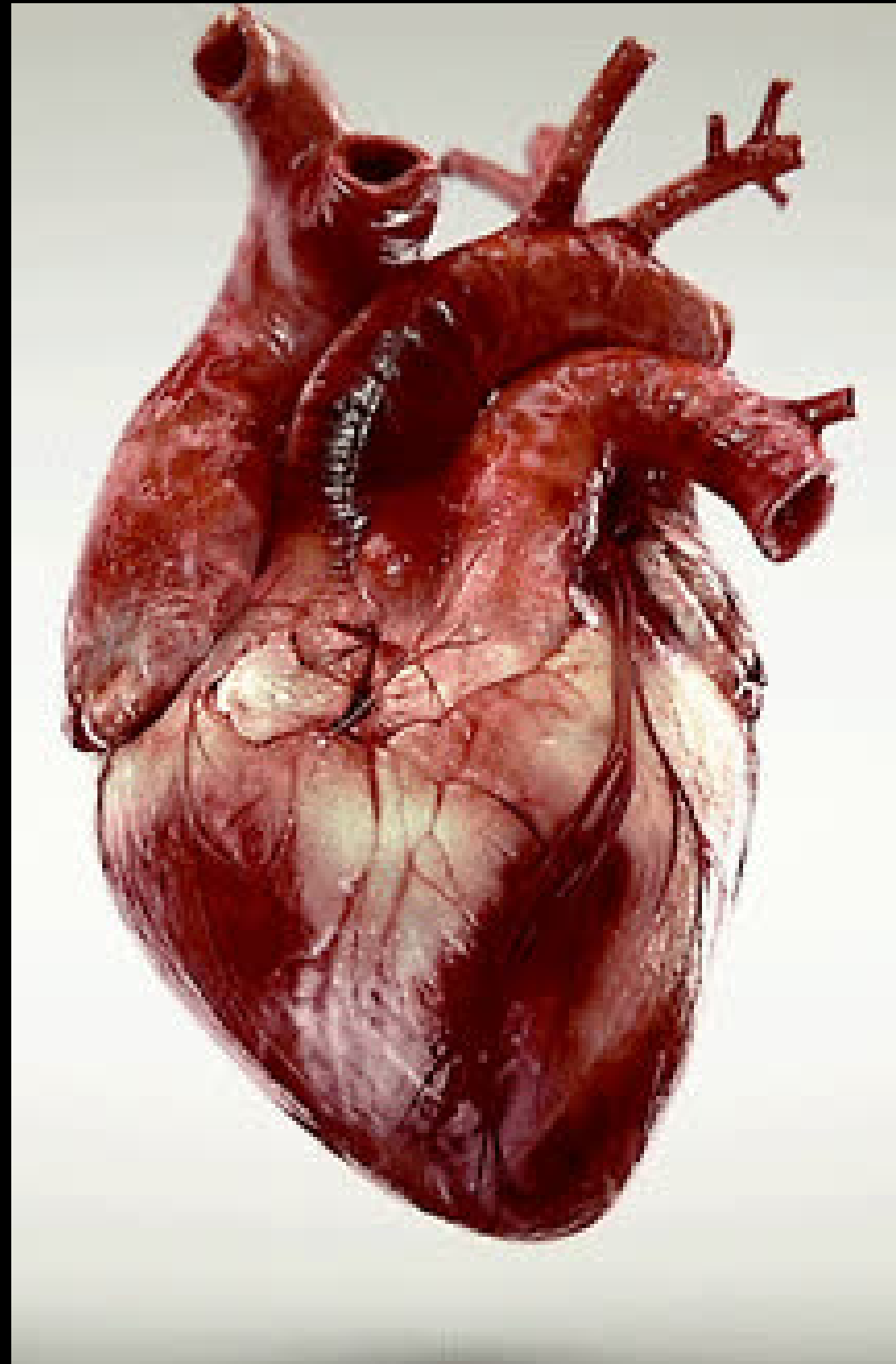


OBSERVE THE SYSTEM

Activity Time

WE MUST BE CONSCIOUS IN PRESCRIBING A SIMPLE MEDICINE. FIRST, WE MUST INTEGRATE THE HUMAN SYSTEM WELL ENOUGH OR THERE IS A HIGH CHANCE, WE CAN ALTER THE SYSTEM AT THE ELEMENTAL LEVEL.

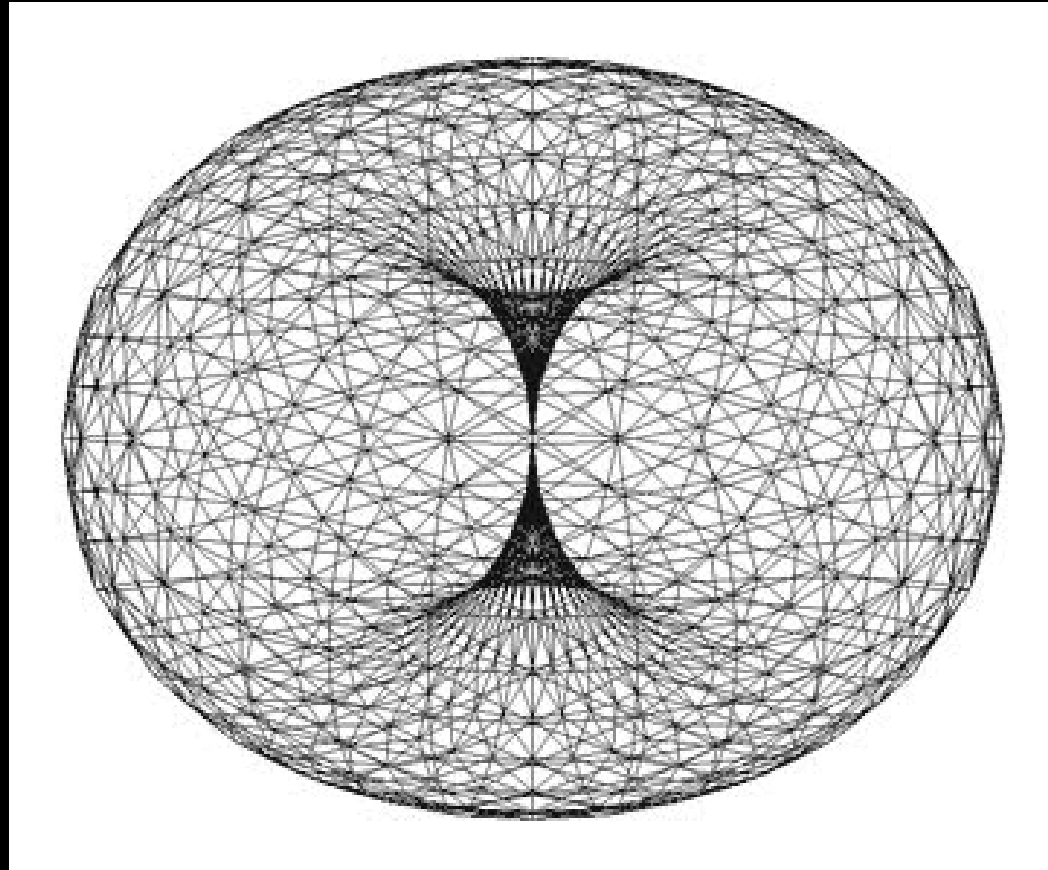
DISCOVER MORE



LOOK AT THESE ILLUSTRATIONS

Student-led activities extend a student's understanding of the lesson. Do synthesize on your own and think of ways you can apply your new learnings in real life. Shoonya means zero energy field. It means the Neutral point.





— THANK YOU

AMRQH had been impossible without the quality leadership and supervision shown by Dr. Prabhat Ch. Kalita

-
-
-
-
-